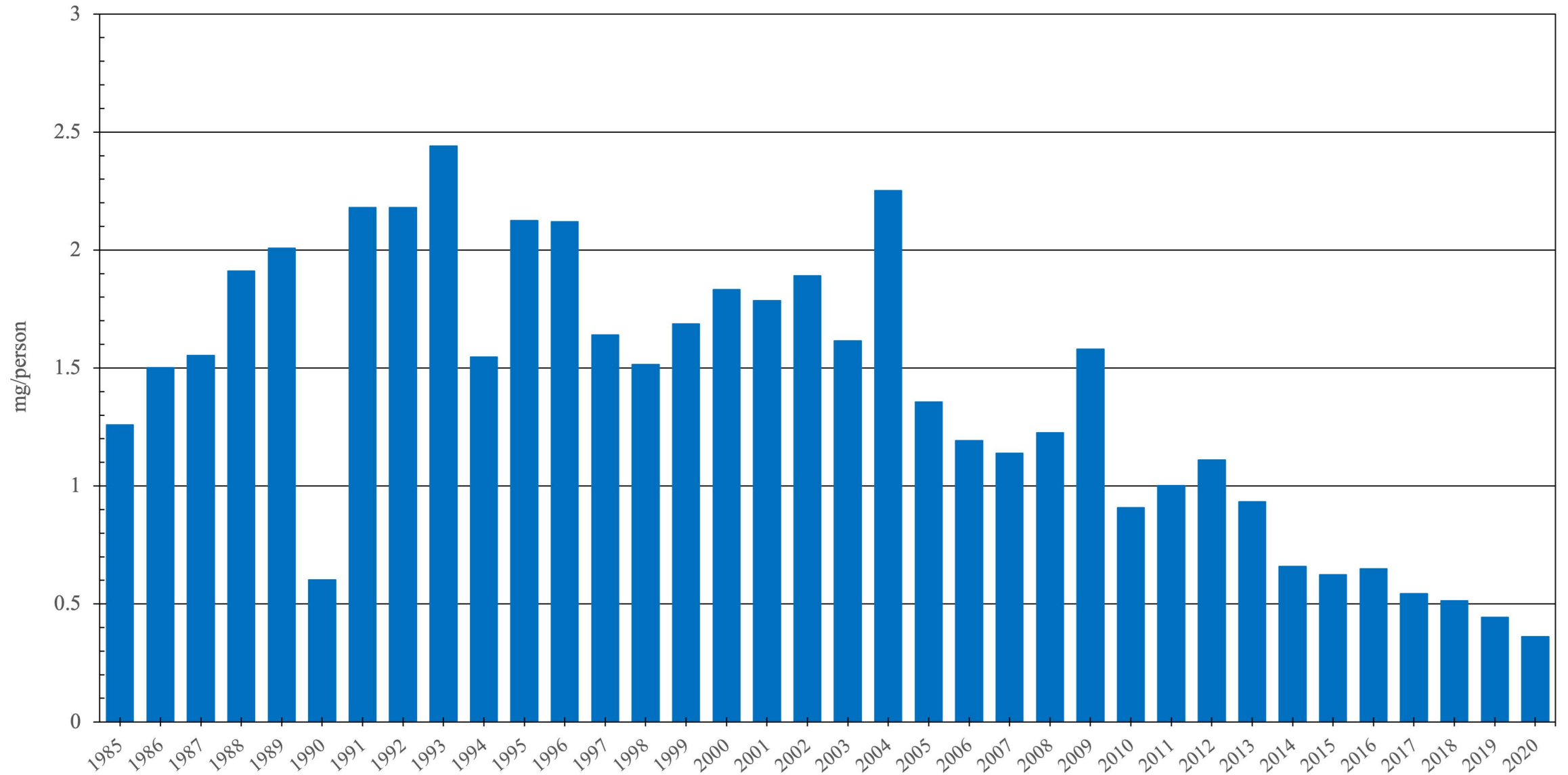


WPRO Region

Pethidine Consumption (mg/person), 1985 - 2020



Sources: International Narcotics Control Board (data); The World Bank & United Nations Statistics Division (population)
Created by: Walther Global Palliative Care & Supportive Oncology, Indiana University Simon Comprehensive Cancer Center, 2022

WPRO Pethidine Consumption, (mg/person)

Year	Pethidine
1985	1.2588
1986	1.5008
1987	1.5536
1988	1.9105
1989	2.0082
1990	0.6029
1991	2.1799
1992	2.1794
1993	2.4410
1994	1.5469
1995	2.1258
1996	2.1196
1997	1.6395
1998	1.5155
1999	1.6875
2000	1.8330
2001	1.7865
2002	1.8918
2003	1.6147
2004	2.2526
2005	1.3556
2006	1.1921
2007	1.1388
2008	1.2263
2009	1.5800
2010	0.9086
2011	1.0010
2012	1.1106
2013	0.9338
2014	0.6598
2015	0.6238
2016	0.6490
2017	0.5435
2018	0.5134
2019	0.4442
2020	0.3612

Data sources:

Consumption Data – International Narcotics Control Board

Population – The World Bank, United Nations Statistics Division

ME Conversion Factors – WHOCC Centre for Drug Statistics Methodology

Walther Global Palliative Care
& Supportive Oncology

Indiana University

Melvin and Bren Simon

Comprehensive Cancer Center