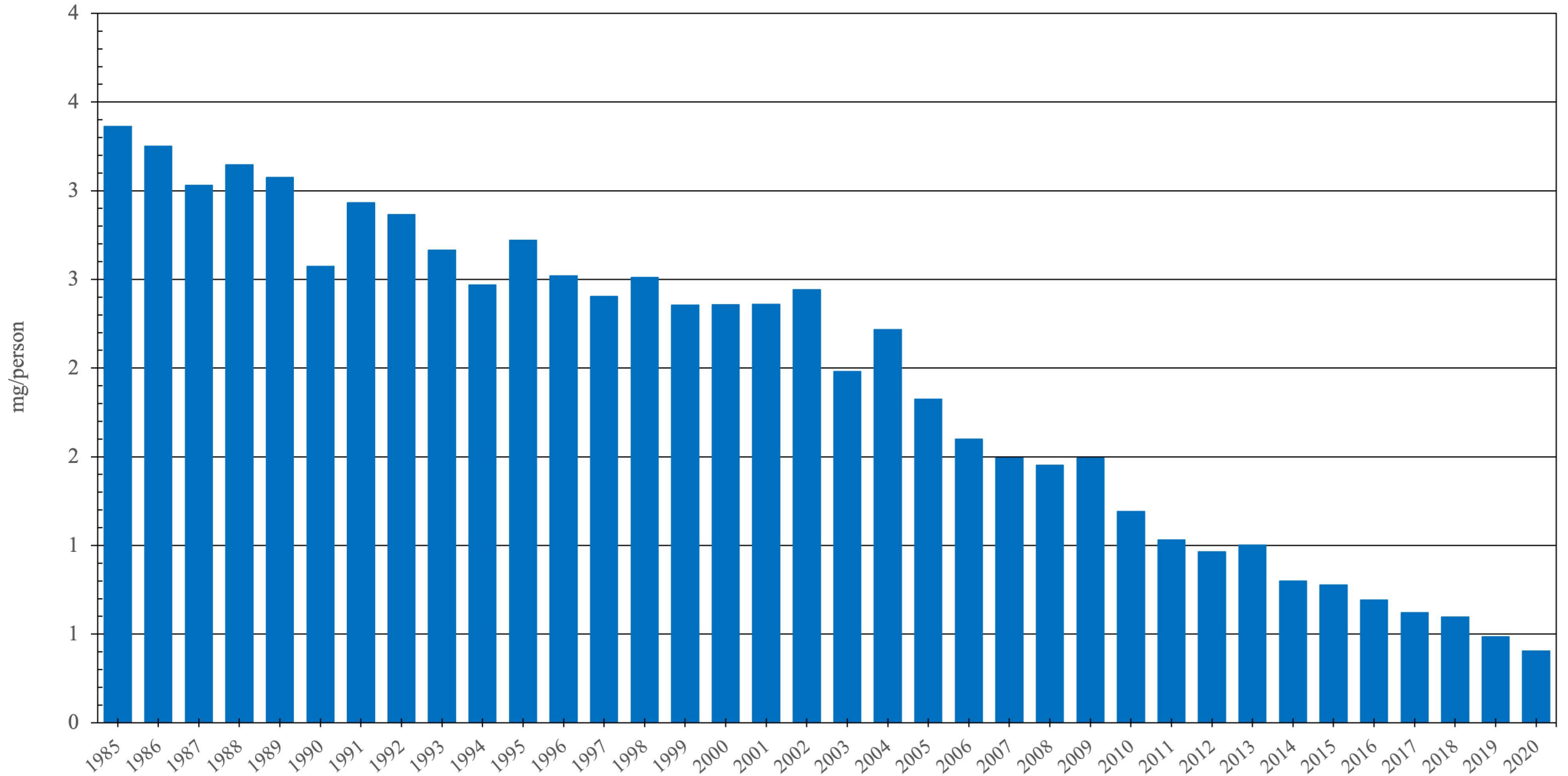


Global

Pethidine Consumption (mg/person), 1985 - 2020



Global Pethidine Consumption, (mg/person)

Year	Pethidine
1985	3.3618
1986	3.2501
1987	3.0296
1988	3.1463
1989	3.0745
1990	2.5723
1991	2.9313
1992	2.8644
1993	2.6647
1994	2.4696
1995	2.7208
1996	2.5191
1997	2.4044
1998	2.5100
1999	2.3548
2000	2.3573
2001	2.3594
2002	2.4429
2003	1.9804
2004	2.2168
2005	1.8243
2006	1.5989
2007	1.4924
2008	1.4531
2009	1.4936
2010	1.1909
2011	1.0302
2012	0.9648
2013	1.0024
2014	0.7993
2015	0.7782
2016	0.6917
2017	0.6209
2018	0.5967
2019	0.4857
2020	0.4055

Data sources:

Consumption Data – International Narcotics Control Board
Population – The World Bank, United Nations Statistics Division
ME Conversion Factors – WHOCC Centre for Drug Statistics Methodology

Walther Global Palliative Care
& Supportive Oncology
Indiana University
Melvin and Bren Simon
Comprehensive Cancer Center