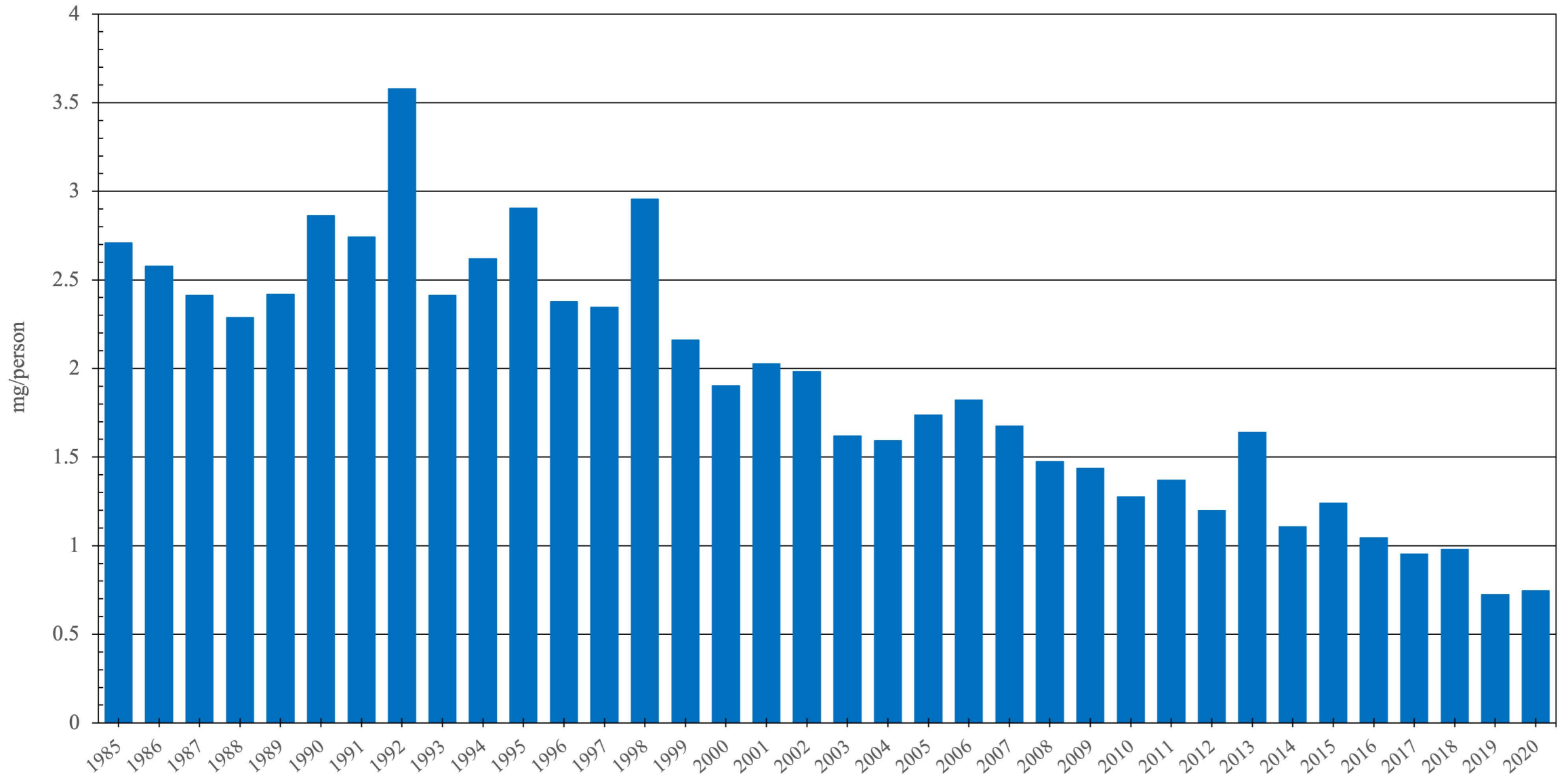


EURO Region

Pethidine Consumption (mg/person), 1985 - 2020



Sources: International Narcotics Control Board (data); The World Bank & United Nations Statistics Division (population)
Created by: Walther Global Palliative Care & Supportive Oncology, Indiana University Simon Comprehensive Cancer Center, 2022

EURO Pethidine Consumption, (mg/person)

Year	Pethidine
1985	2.7080
1986	2.5765
1987	2.4112
1988	2.2872
1989	2.4187
1990	2.8630
1991	2.7425
1992	3.5788
1993	2.4123
1994	2.6194
1995	2.9048
1996	2.3767
1997	2.3453
1998	2.9561
1999	2.1612
2000	1.9015
2001	2.0262
2002	1.9817
2003	1.6197
2004	1.5924
2005	1.7376
2006	1.8210
2007	1.6752
2008	1.4729
2009	1.4359
2010	1.2766
2011	1.3697
2012	1.1966
2013	1.6397
2014	1.1065
2015	1.2402
2016	1.0432
2017	0.9523
2018	0.9800
2019	0.7222
2020	0.7449

Data sources:

Consumption Data – International Narcotics Control Board

Population – The World Bank, United Nations Statistics Division

ME Conversion Factors – WHOCC Centre for Drug Statistics Methodology

Walther Global Palliative Care
& Supportive Oncology

Indiana University
Melvin and Bren Simon
Comprehensive Cancer Center