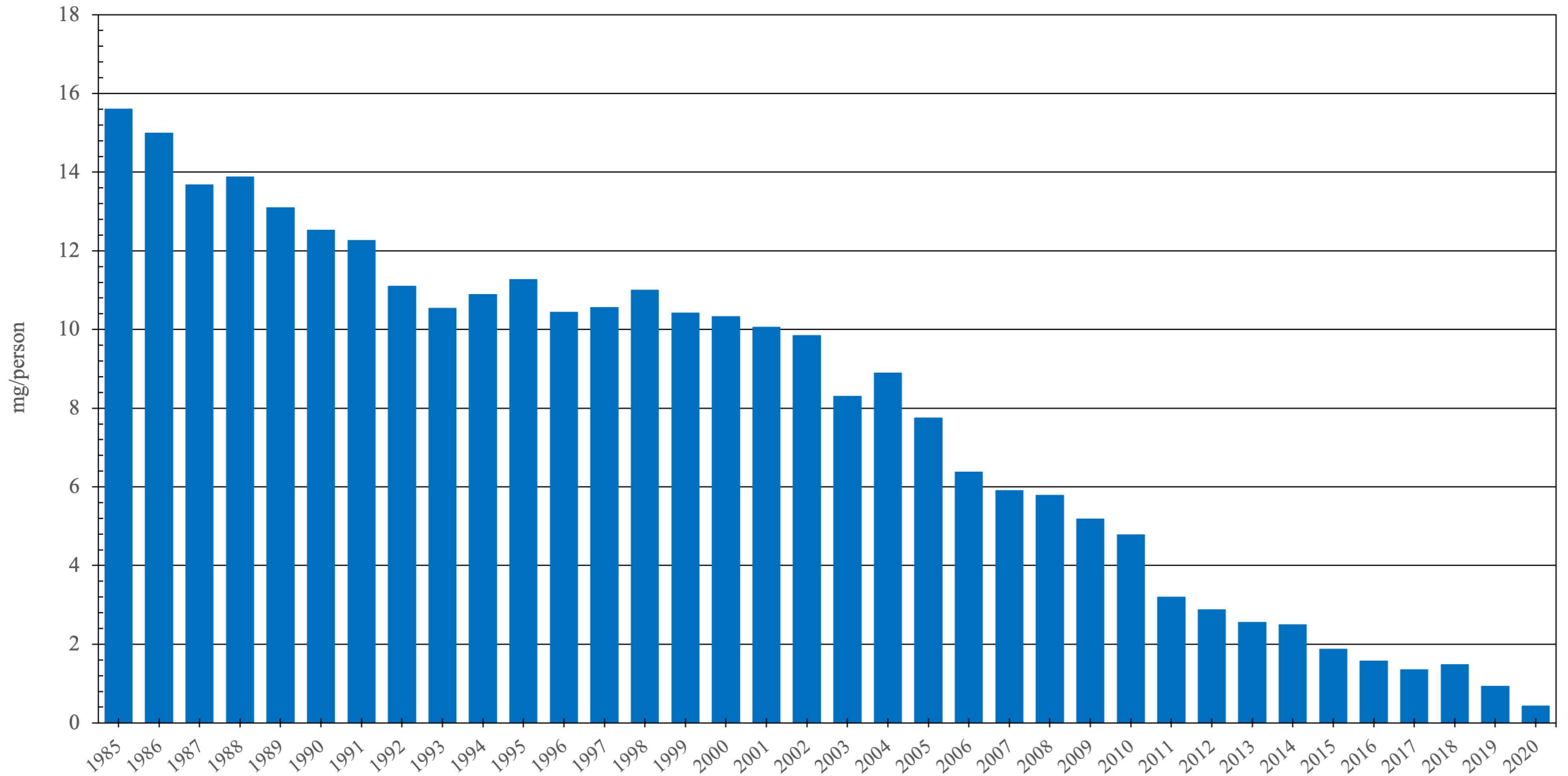


AMRO/PAHO Region

Pethidine Consumption (mg/person), 1985 - 2020



AMRO/PAHO Pethidine Consumption, (mg/person)

Year	Pethidine
1985	15.5986
1986	14.9857
1987	13.6779
1988	13.8739
1989	13.0931
1990	12.5193
1991	12.2564
1992	11.0948
1993	10.5296
1994	10.8865
1995	11.2694
1996	10.4322
1997	10.5508
1998	10.9936
1999	10.4162
2000	10.3203
2001	10.0537
2002	9.8402
2003	8.2967
2004	8.8868
2005	7.7474
2006	6.3702
2007	5.9034
2008	5.7814
2009	5.1821
2010	4.7774
2011	3.1911
2012	2.8683
2013	2.5536
2014	2.4937
2015	1.8735
2016	1.5662
2017	1.3425
2018	1.4763
2019	0.9262
2020	0.4205

Data sources:

Consumption Data – International Narcotics Control Board

Population – The World Bank, United Nations Statistics Division

ME Conversion Factors – WHOCC Centre for Drug Statistics Methodology

Walther Global Palliative Care
& Supportive Oncology
Indiana University
Melvin and Bren Simon
Comprehensive Cancer Center