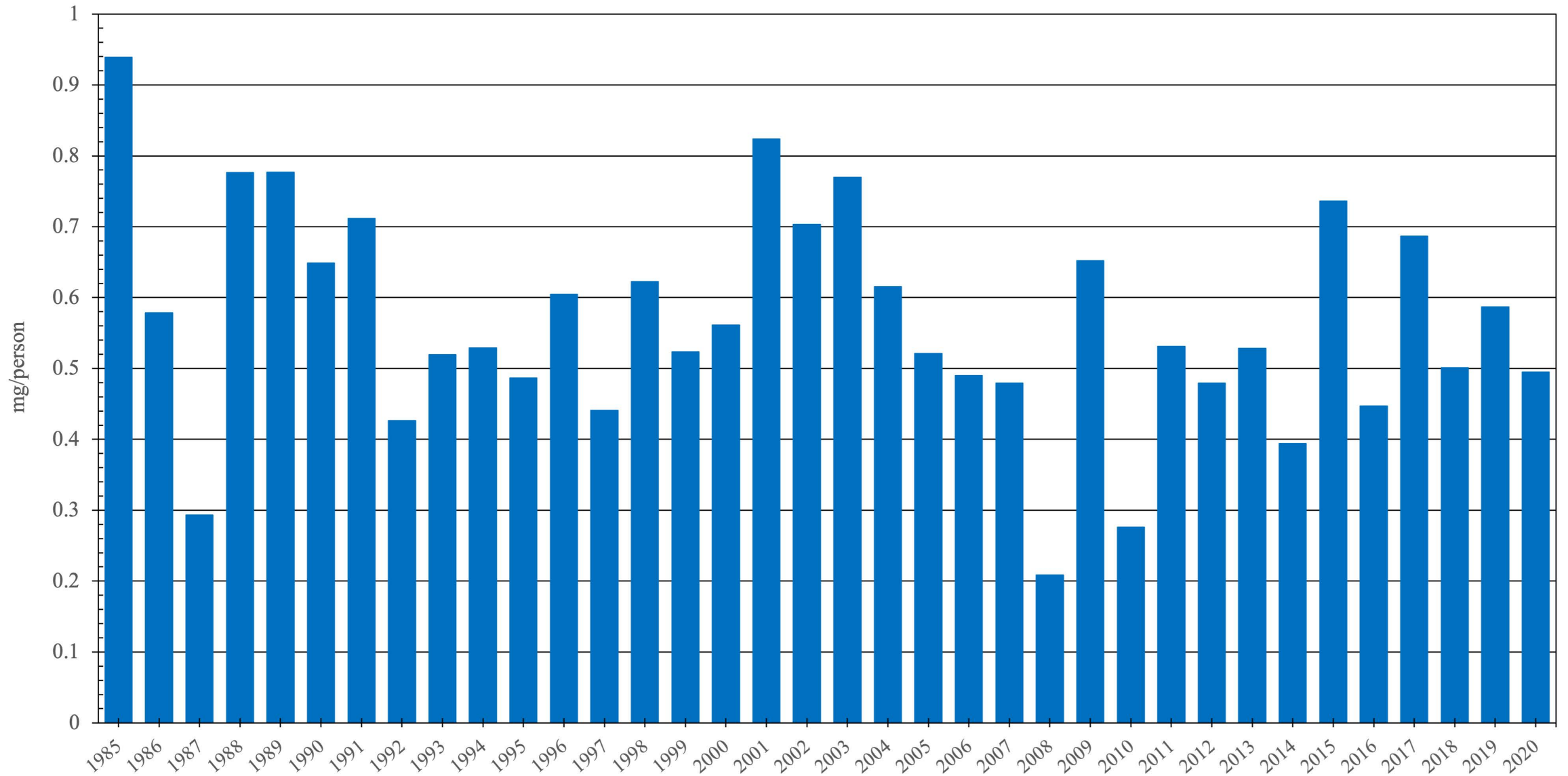


# AFRO Region

Pethidine Consumption (mg/person), 1985 - 2020



Sources: International Narcotics Control Board (data); The World Bank & United Nations Statistics Division (population)

Created by: Walther Global Palliative Care & Supportive Oncology, Indiana University Simon Comprehensive Cancer Center, 2022

# AFRO Pethidine Consumption, (mg/person)

Year	Pethidine
1985	0.9390
1986	0.5783
1987	0.2931
1988	0.7763
1989	0.7769
1990	0.6486
1991	0.7115
1992	0.4264
1993	0.5193
1994	0.5289
1995	0.4868
1996	0.6045
1997	0.4409
1998	0.6227
1999	0.5231
2000	0.5610
2001	0.8236
2002	0.7033
2003	0.7694
2004	0.6150
2005	0.5211
2006	0.4898
2007	0.4793
2008	0.2087
2009	0.6520
2010	0.2757
2011	0.5314
2012	0.4794
2013	0.5286
2014	0.3939
2015	0.7360
2016	0.4469
2017	0.6868
2018	0.5008
2019	0.5867
2020	0.4949

## Data sources:

Consumption Data – International Narcotics Control Board

Population – The World Bank, United Nations Statistics Division

ME Conversion Factors – WHOCC Centre for Drug Statistics Methodology

Walther Global Palliative Care  
& Supportive Oncology

Indiana University

Melvin and Bren Simon

Comprehensive Cancer Center